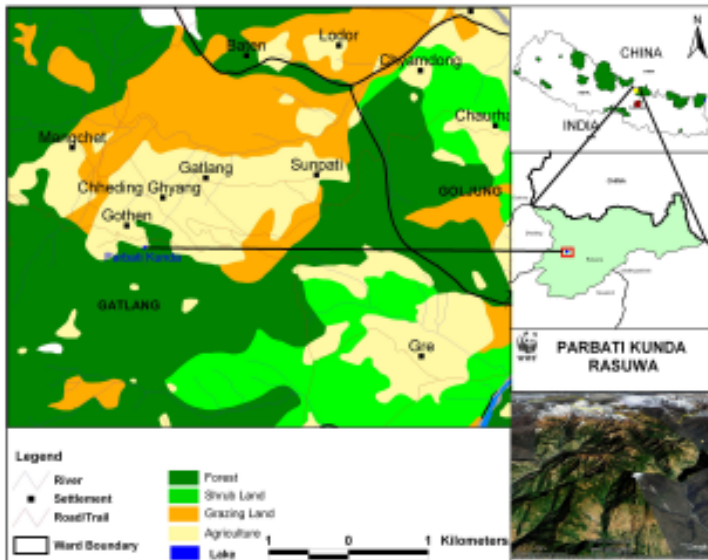




FACTSHEET

Parbatikunda



Coordinates: 28° 09' 3" N
85° 15' 8" E

Area: 3.5 ha including marshes

Elevation: 2500 m

OVERVIEW:

Parbatikunda lies in mid-hills region of Rasuwa district, and is surrounded by a stone wall. The Parbatikunda looks like a tigers' paw shaped. The perimeter of the kunda is about 700 m. There is a temple of Shiva (God) and Parbati (Goddess) and a resting plate towards the west of the kunda. About 300 m south-west of the Parbatikunda, a famous monastery of about 300 years old, called as "Chheding Gomba" exists. This is a freshwater wetland which receives water from its underground recharges and seepage from surrounding forests during monsoon. The outflow of the kunda lies in the northern side which flows north-east towards the Gatlang village and joins to Gatlang khola. Major part (about 80%) of the pond is covered with grassy marsh and only about 20% area is under water. The maximum depth of the Parbatikunda is about 3 m. Water of all the lake falls to Chilime river via Gatlang Khola which joins the Trishuli River in the East.

HYDROLOGICAL VALUE:

The discharge is 0.09 m³/s.

BIODIVERSITY VALUE:

Flora: The small marshy area of Parbatikunda lying inside the stone fence harbors several species of flowering plant. The *Acorus calamus* (Bojho/sweet flag) is most dominated species followed by *Juncus* spp., *Eriocaulon* sp., *Cyperus* spp., *Fimbristylis* spp., *Pedicularis* sp., *Polygonum hydropiper*, etc. The *Selaginella* sp. is common in the spongy ground of the pond. Some young stands of *Quercus semicarpifolia*, *Zanthoxylum armatum*, *Lyonia ovalifolia*, *Acer* sp., *Prinsepia utilis*, *Viburnum* spp., etc., can be observed in some drier areas. *Acorus calamus*, *Swertia chirayita*, *Allium wallichii* and *Potentilla fulgens* are the useful plants found around the Parbatikunda.

The mountain oak (*Quercus semicarpifolia*), *Rhododendron arboreum*, Himalayan silver fir (*Abies spectabilis*) and Himalayan hemlock (*Tsuga dumosa*) are important tree species found around the Parbatikunda. The marshy land of Parbatikunda is dominated by herbaceous vegetation.

Fauna: Common wildlife in the catchment area of the Parbatikunda are Wildboar (*Sus scrofa*), Barking deer (*Muntiacus muntjak*), Jackal (*Canis aureus*), Pika (*Ochotona* sp.) and Yellow throated Marten (*Martes flavigula*).

White ducks or wild ducks (Aquatic birds) can be seen in Parbatikunda in spring. Satyr Tragopan (*Tragopan satyra*) and Kalij pheasant (*Lophura leucomelanos*) are rarely seen and Himalayan Monal (*Lophophorous impejanus*) comes down to lower ranges to Parbatikunda from upper Mangchet area during snowfall.

Wetland dependent birds recorded in the catchment area of Parbatikunda are white-capped water redstart, Plumbeous water redstart and Spotted Forktail.



■ SOCIO-CULTURAL AND RELIGIOUS VALUES:

Local people are dependent on the daily livelihood to the wetland for domestic uses and irrigation downstream.

Parbatikunda is believed to be a creation of Shiva (God) for the Parvati (Goddess) and considered a sacred place where a large number of Hindu and Buddhists of nearby places visit and take a holy bath and rituals during Janai Purnima (Full Moon) festival.

The cultural and religious values of Parbatikunda are celebrated mainly during the Janai Purnima and Phagu/Holy Purnima festivals. The traditional healers such as Jhankri, Lama and some skilled people play specific roles. Jhankri and Lama perform separate celebration as per their norms. Many local people gather in a group, making circles and perform cultural dances with duet in the local Tamang language. The marriage arrangement and love affairs also starts during these occasions. Local Sherpa and Tamang people are decorated with gold and silver ornaments and

traditional customs. Lama and Jhankris wear specific dresses.

■ THREATS:

- Overgrazing
- Unsustainable harvesting of resources including NTFPs
- Poaching of wild animals

■ CONSERVATION MEASURES:

Local communities are interested in taking care of the wetland. The community forest user groups and local Community Based Organizations (CBO) are keen to see its conservation and development. District Forest Office is responsible organization for national and community forest along with support from local communities.

District development committee and village development committees are supporting for the infrastructure development. In past, the TRPAP has supported the tourism related activities and conservation.