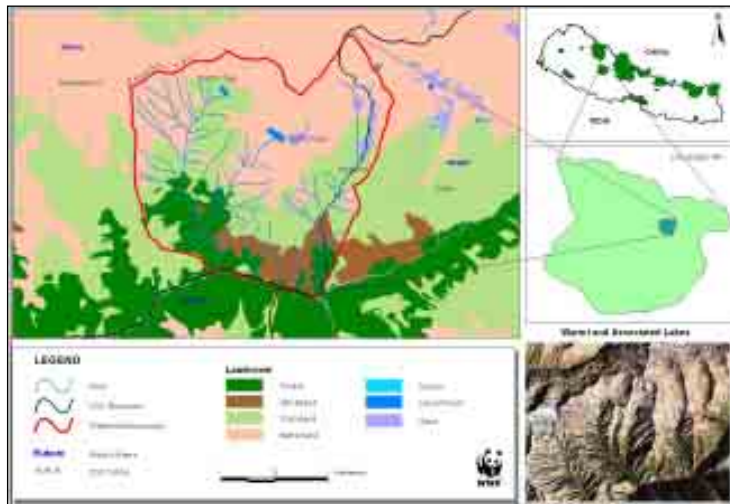




FACTSHEET

Warmi Lake System



Coordinates: 28° 39' 29.9" North Latitude
83° 06' 29.7" East Longitude

Area: 15 ha

Elevation: 4490 m

OVERVIEW:

The Warmi lake is a freshwater lake and oligotrophic in nutrient content. The lake is bowl shaped with southern end straight and northern end dentate and lies at the base of Churen mountain. The lake system is composed of three lake series, Hepu, Warmi and Parmi, the drainage from which supplements Gustung river system. Gustung and Monsoon rivers join just below 1 km distance from the Monsoon mela and both form and provide services to the downstream residents. The villagers of Hukam, Maikot, Taksera use the water from the river. The Gustung River originates from the

glaciers of Churen mountain and is fed by Warmi, Parmi and Hepu lake systems. The river forms a steep forested valley from which the high and rugged mountain range Chaluke range rises (Wegge 1976).

HYDROLOGICAL VALUE:

The lake has two prominent inlets or glaciers from which the water volume of the lake is maintained. It has only one outlet on its southern shore, which joins Gustung River while passing through rocky cliffs and gorges. The level of water is high in rainy season and after the melting of ice. The water users downstream are few traditional ghatta users and many domestic users who reside distant from Gustung and Warmi River confluence.

BIODIVERSITY VALUE:

Flora: The most expensive medicinal plant species *Cordyceps sinensis* is available at the catchments of Warmi Lake. *Primula*, *Potentilla* and *Anemone* species have a large presence in the lake catchments. The genera *Pedicularis*, *Potentilla*, *Primula*, and *Rhododendron* possess the higher number of species. Several threatened plants such as *Cordyceps sinensis*, *Dactylorhiza hatagirea*, *Taxus wallichiana*, *Neopicrorhiza scrophulariflora*, *Abies spectabilis* and *Pinus wallichiana* under IUCN, Government of Nepal and CITES category and number of endemic plants have been recorded from the catchment and lake areas. *Podophyllum hexandrum*, *Nardostachys grandiflora*, *Taxus wallichiana*, *Prunus carmesina* are some of the threatened plants around the Warmi Lake.





Fauna: *Satyr tragopan*, Koklas pheasant, Cukor partridge, Blood pheasant, Red and yellow billed cough, Egyptian vulture, Crag martin, House martin, Finches, Upland pipit, Black stork, Wall creeper, Oriental skylark, Danphe (*Lophophorus impejanus*) are important birds of the reserve. Himalayan snow cock (*Tetraogallus himalayensis*) and snow partridge were also observed in this area. *Catreus wallichii* (Cheer) is decreasing by 18.75% in Dhorpatan Hunting Reserve due to the hunting, habitat fragmentation and degradation, predation and inbreeding.

Two wetland birds, Ruddy shelduck (*Tadorna ferruginea*), Shoveler (*Anas clypeata*) are found in the Warmi Lake. Yellow billed chough (*Pyrrhocorax graculus*) and Large billed crow (*Corvus macrorhynchos*) are dominant at Warmi and its catchment areas.

Present study did not find any herpeto fauna in Warmi lake. Fish species were not recorded in the Warmi Lake during the survey which may have been due to the climatic conditions. Faecal matter of snow leopard was abundant around Warmi and Hepu Lake and Monson mela. Foot prints and fresh grazing signs of blue sheep were observed at Warmi Lake.



■ SOCIO-CULTURAL AND RELIGIOUS VALUES:

Warmi Lake is sacred and has a religious importance as a pilgrimage. There was a tradition to pay homage and offer coin to the lake while crossing the area. According to a local belief, a person who sees the lake the first time is called *Panthe* and this person should offer coin to the lake. The research team found a copper coin from late king Prithivi Narayan Shah clearly revealing that the site had sacred and pilgrimage value since very early times.

The water users reside at a distance from Gustung and Monson River confluence. Mainly the users of Hukam, Maikot, Taksera villages consume water for their needs. The traditional usages are mainly for drinking water by human beings and livestock of the villages. A trail along the Warmi and Parmi lakes was reported being used as a trading route to carry salt from Tara Bhot, Charka Bhot and Tibet, but now it is not used after availability of iodinated salt from nearby markets.

■ THREATS:

- Encroachment
- Overgrazing
- Over-exploitation of the non-timber forest products (NTFPs), especially highly threatened species
- Hunting and poaching
- Pollution caused by visitors and trekking tourists
- Overgrazing leading to the disruption of the natural succession process and increase in the onset of the invasive, unpalatable species

■ CONSERVATION MEASURES:

Warmi Lake system falls under the ownership of the Dhorpatan Hunting Reserve. The Ministry of Forests and Soil Conservation, Government of Nepal is the legal authority and the park is governed by the National Parks and Wildlife Conservation Act 2029 BS (1973) and Himali Rastriya Nikunja Niyamawali (Mountain National Parks Regulation) 2036 B.S (1979). Grazing is allowed as traditional right and game hunting is permitted after paying royalty to the government and with community's consent. Collecting timber and non-timber forest products is permitted to locals through the permission of the chief conservation officer and banned for any commercial purpose.